

Reports

AgES HRMS has a very powerful reporting system which includes several reports and trend charts. All the reports used by the HR can be derived from the system including the statutory reports.

Some of those mentionable reports are

- Muster Roll Report
- Pay-slip Report
- Late comers and Early goes report
- Payment Report
- Increment Report
- Trend report on Absenteeism
- PF statement Report
- Reconciliation Report
- Form 15 & Form 31 etc.

Salient Features

- Simple and reliable system
- Fully customizable
- SMS & Email Notifications
- Well defined Approval system
- Integration can be done with the existing system
- Multiple country payroll handling
- Reduces the Manpower effort
- Easily accessible
- Android Application

Android Application

With the invent of new technology our AgES HRMS comes as a package along with the Android Application. The integrated android application is very helpful in carrying out the day to day HR activities much easier. The below mentioned are the provisions currently available in our Android Application

- View Profile
- Apply & Approval for Leave, OT, OD, Permission
- View & Download Pay slip
- History and Availability of applicable leave.

PARTIAL CLIENTELE



HARDWARE PARTNERS



Reach Us

Agaram InfoTech Pvt. Ltd.,
No. 2-6, A Block, First Floor, Indra Complex,
Pillaiyar Kovil Street, Nesappakkam,
Chennai - 600 078., Tamil Nadu, India.
044 - 42178618 / 19 / 20
044 - 42148456
sales@agaraminfotech.com



Comprehensive and User-Friendly application that helps in automating your **HRMS** functions





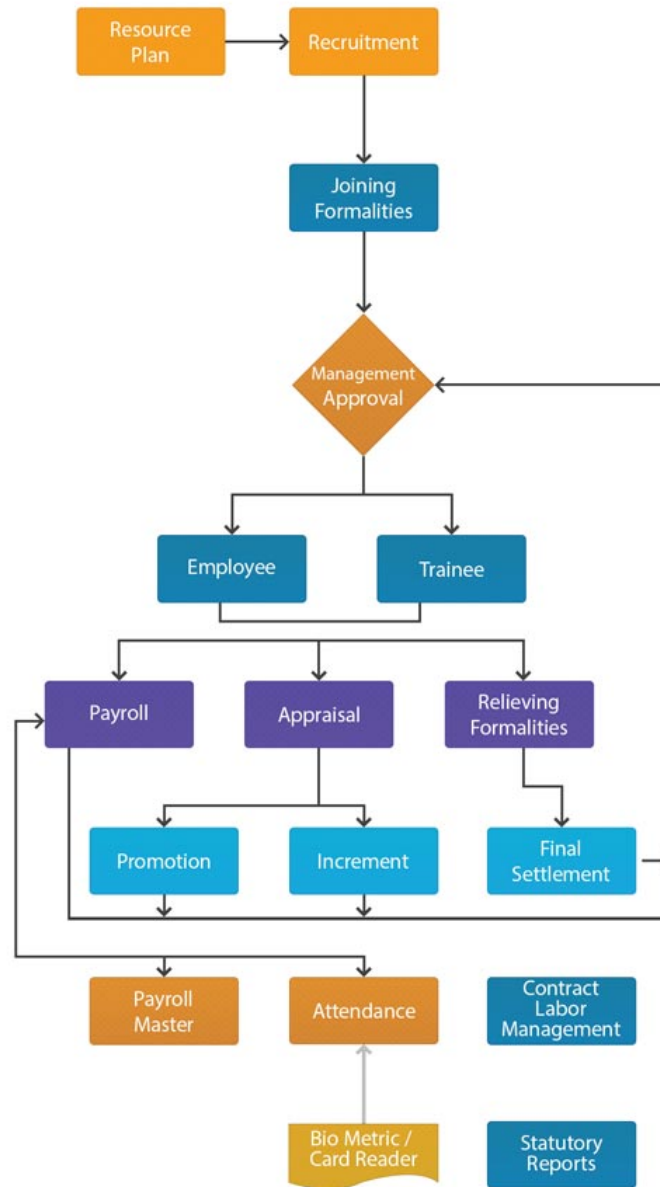
AgES for HRMS

AgES HRMS enables you to efficiently manage and automate all the HR related activities in the company. All the activities starting from recruitment, joining formalities, Attendance, payroll, promotion, transfer, appraisal till relieving formalities are captured in the system with a simple and effective user interface. Another major advantage is the AgES HRMS handles the contract labor management with ease. It is developed with a realistic view of handling the employee's data in real-time with maximum efficiency. AgES serves as a wonderful interface between the employees and the HR by efficiency interactive system.

Why AgES?

- Easy to understand and use
- Automatic Payroll processing
- Powerful Recruitment System
- Integrated Dashboard
- Can be integrated with any third party biometric system
- Can handle multiple currency payroll in a single system
- Efficient leave management system
- All major reports in a single click
- Involves all statutory reports in-built
- Contract labor management

PROCESS FLOW



MODULES

RECRUITMENT

- Resource Request – The exact need of no of resources captured
- Resource recruitment plan – Planning done for recruiting resources for multiple departments
- Interview scheduling – Notifies the candidate and interviewer for the schedule of the interview
- Interview rating – Captures the performance of the candidate appearing for the interview
- Joining formalities – Selected candidate is converted as an employee once completing all the joining formalities

PAYROLL

- Multiple countries payroll in a single system
- Bulk payroll processing with Approval
- Earnings and Deductions mastering facility
- Advance Payments
- Loans
- Encashments
- Arrear Payments
- Miscellaneous Additions and Deductions
- Gift/ LPA payments
- Integration with the Finance system

ATTENDANCE

- Bio-metric Integration
- Shift Allocation
- Leave management
- OT Application and Approval
- OD Application and Approval
- Permission Application and Approval

EMP. DATABASE & TRAINING

- Entire data of Employee
- Probationary Period & Confirmation
- Employees training period is captured
- Performance monitored during training

APPRAISAL, PROMOTION & RELIEVING

- Self-Appraisal
- Peer Appraisal
- Manager Appraisal
- Performance Assessment
- Appraisal Rating
- Promotion
- Increment
- Relieving formalities
- Full and Final settlement

CONTRACT / CASUAL LABOR MANAGEMENT

- Labor Master
- Labor Skill Classification
- Contractor Billing
- Labor Attendance Maintaining
- Daily Labor Allocation
- Labor Replacement
- OT billing for Labors